

## Pre-School Activity Sheet



What worlds can you imagine for yourself and create for others?  
Enter this world where you can be an explorer, adventurer and dreamer today!

Name: \_\_\_\_\_

School: \_\_\_\_\_



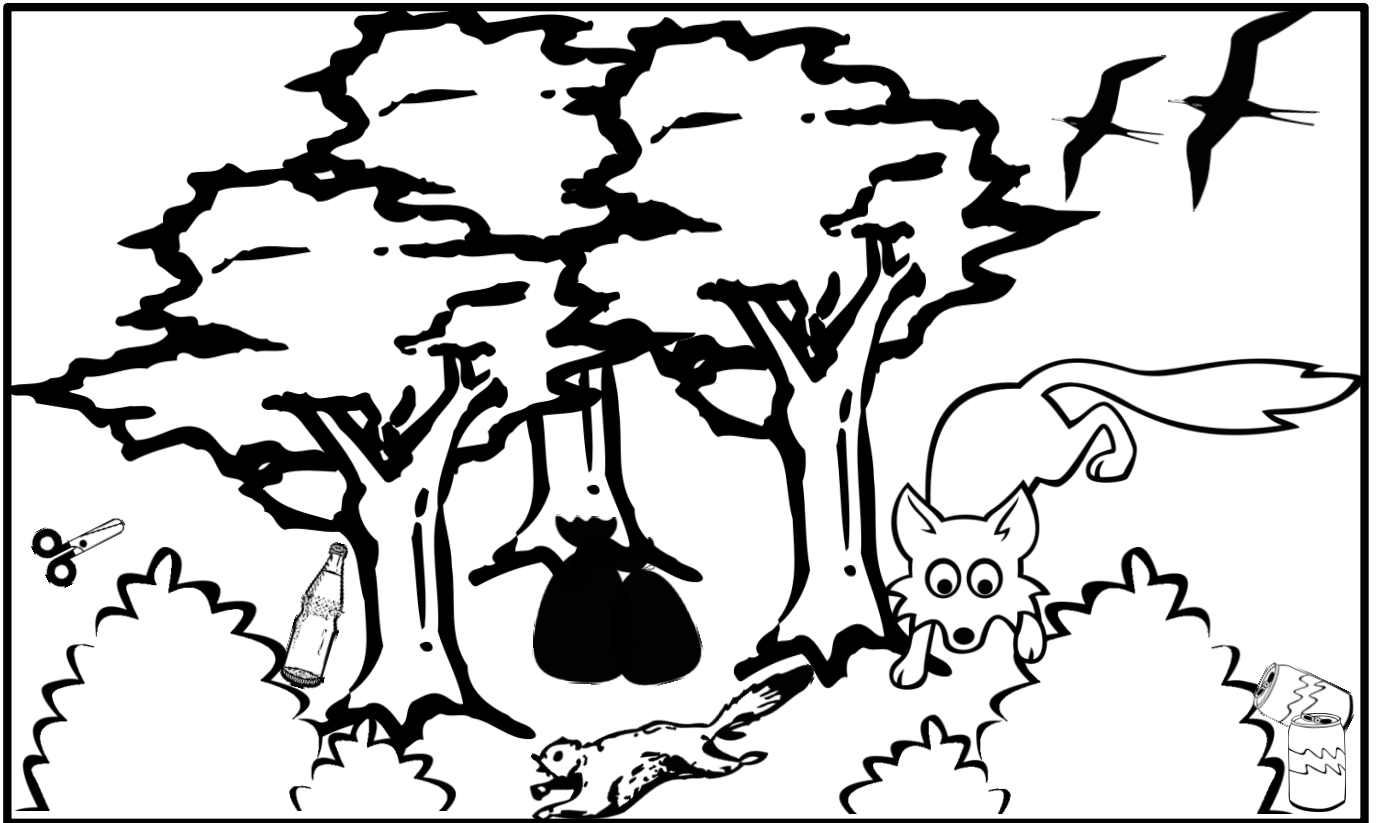
Head to the gallery outside the main building

Look at the artwork.

What do you see? Fill in the blanks below.

T \_ \_ \_

Trees are naturally found in the forest. What are the items that do not belong in the forest? Circle them!



Can you identify the animal below?




S \_ U I \_ \_ E L

This is a picture of a tree house.



Count the number of steps to get to the tree house. Write the number and spell it here!

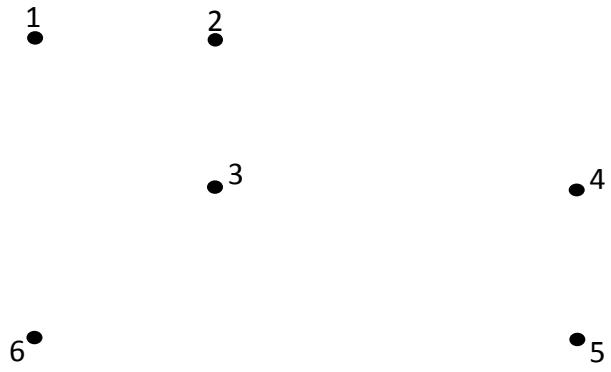
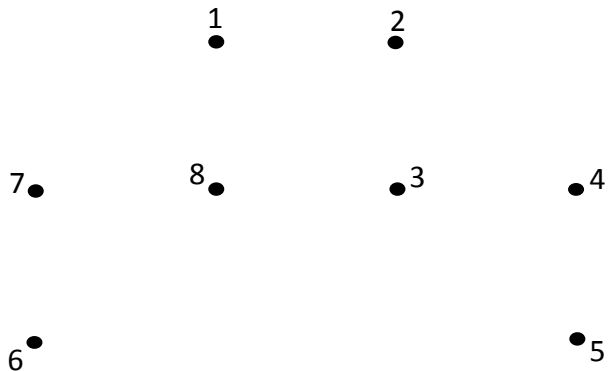
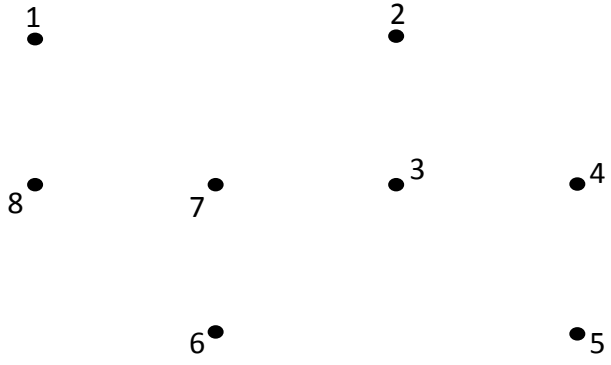
Imagine you live in a tree house. Who would you like to live with?

 **Discussion Time**

Do you think protecting nature is important for the survival of animals?  
Why do you say so?

 Enter the gallery at level 1

There are 5 different Tetris blocks found in the gallery. Join the dots to find out what some of the shapes are!



What colours do you see in the gallery? Write them below!

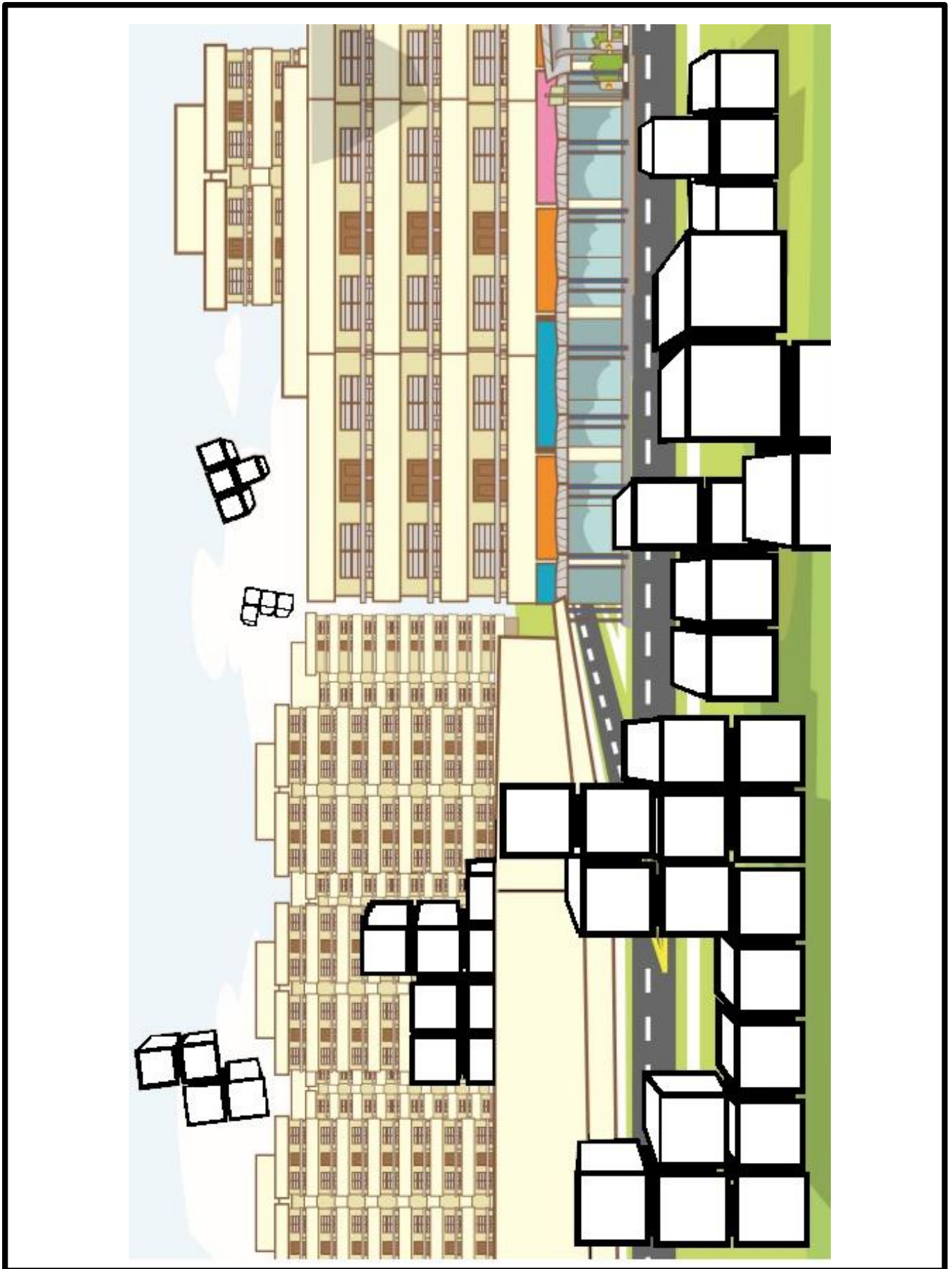


Find these colours in the puzzle below. Circle them all!

- |        |       |        |        |     |
|--------|-------|--------|--------|-----|
| YELLOW | BLUE  | PINK   | PURPLE | RED |
|        | GREEN | ORANGE |        |     |

O	B	A	X	I	I	L	P	R	F
R	O	Q	Y	C	B	L	U	E	Y
A	R	M	W	E	T	Y	A	D	L
N	P	U	R	P	L	E	T	P	D
G	N	H	Y	U	J	L	D	N	V
E	G	R	E	E	N	T	O	Y	J
A	E	U	C	X	K	Z	N	W	R
I	O	E	P	I	N	K	Q	S	T

Choose your three favourite colours to fill in the blocks below!

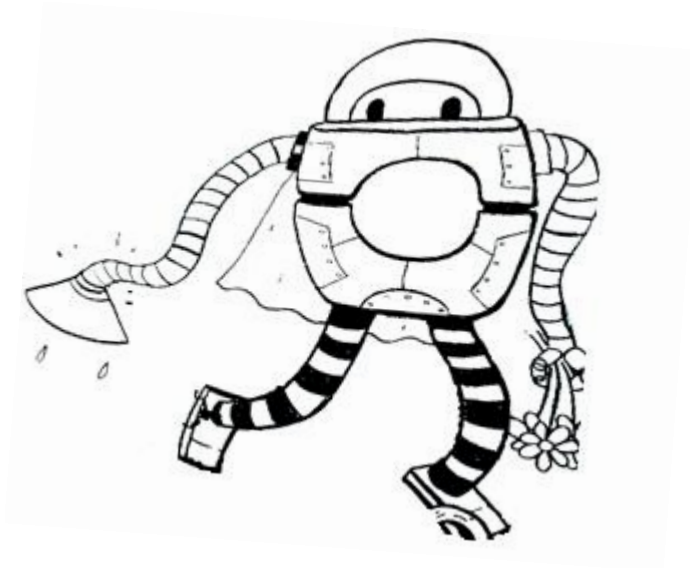




Head to the staircase

Walk up the stairs and look at the drawings. These drawings are called doodles. They are drawn by the *Band of Doodlers*.

Look for this character below. What is it? Unscramble the words to find out.



B

T

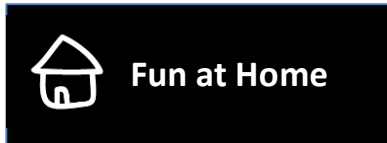
O

O

R

It is a \_\_\_\_\_

Would you like to be friends with this character? Why?



The artist uses markers to draw the doodles. Doodle your favourite character using a marker in the box below!

What is the name of the character you have just drawn?

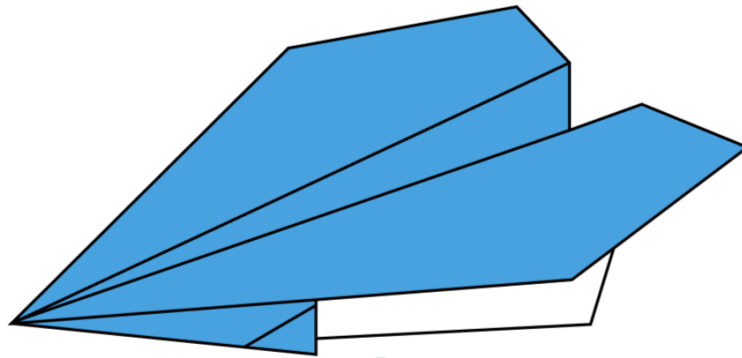




**Head to level 2 and enter the moonroom**

Fold a paper plane!

- Take a piece of origami paper.
- Follow the instructions given in the moonroom.
- Once your paper plane is ready, decorate it!





Head to the gallery on the right at level 4

Fill in the blanks to find out the artwork title.

K \_ K \_ ' S    S \_ C R E \_

The artist who created this work is

K U M \_ U \_  
\_ E R \_ A \_ D O



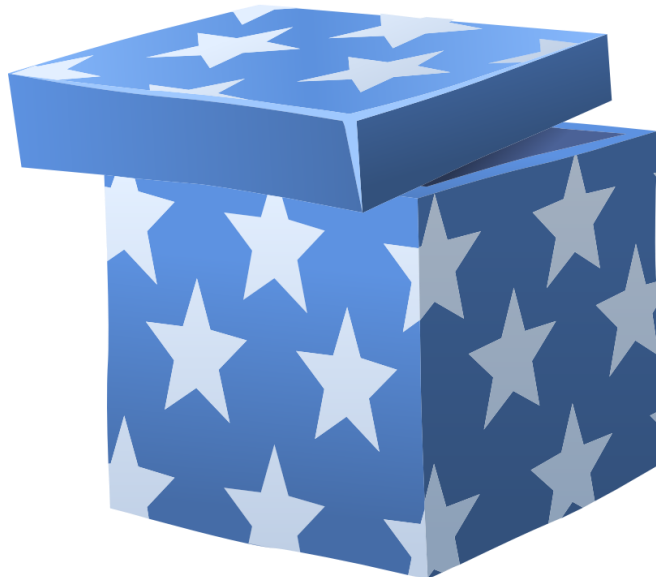
Discussion Time

Walk around the gallery. Enter any of the boxes.

What do you see?

What can you hear or feel?

Each box has a different theme. Imagine you own a giant secret box. What would you put in the box? Circle them!





Head to the gallery on the left at level 4

This artwork is called *Dream House*. How do you feel when you look at this artwork? Colour the face that matches your feelings.



Now, draw your dream house below!